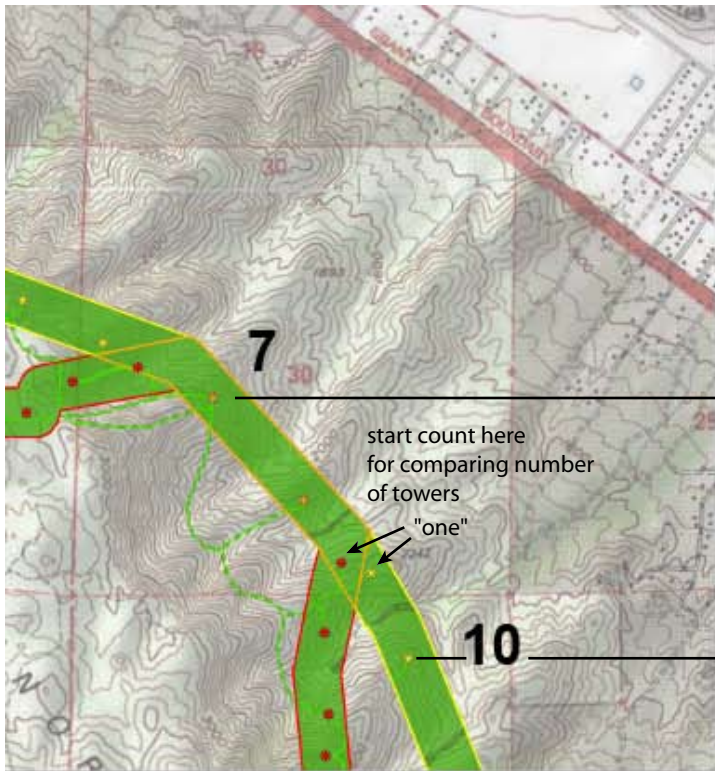


## Simulated Segment of TE/VS

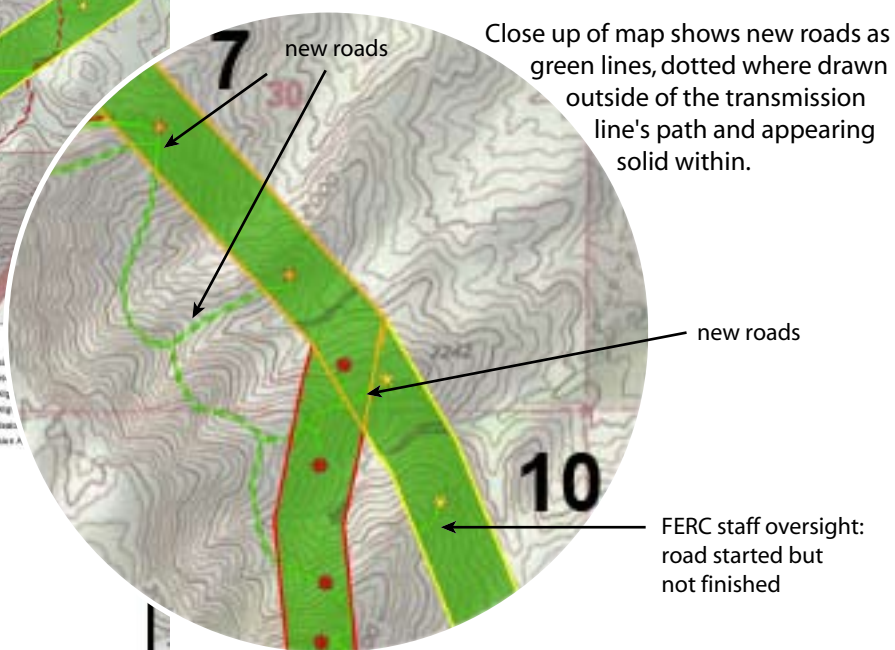
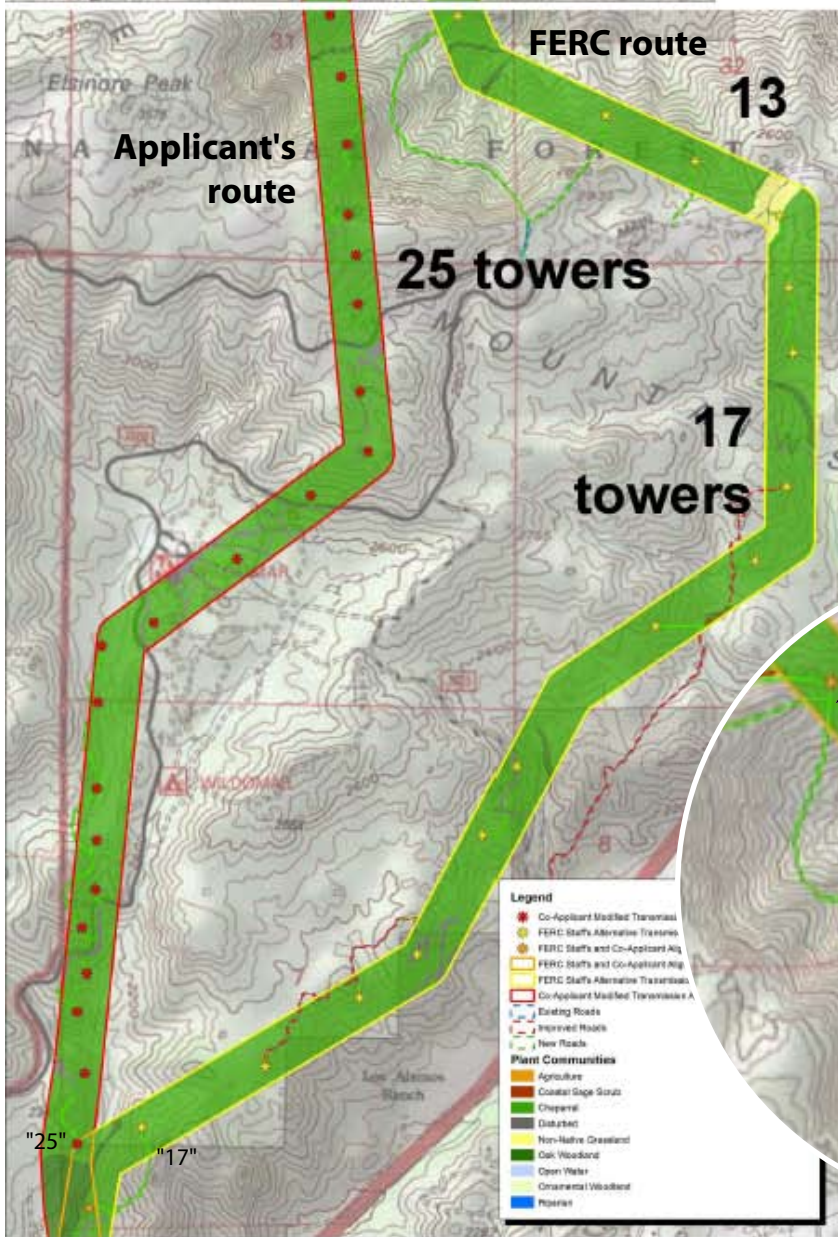
Segment of FERC Staff Alternative route on which simulations of Palomar Road, Collier Elementary, and Wesley and Palomar are based on.

Tower numbering here are my numbers counting the towers in order starting south of the proposed upper reservoir, or where the underground portion emerges to become overhead transmission lines.

Note that the FERC route uses fewer towers by exploiting the highly visible ridges for towers allowing a longer span of the cables over over the ravines.



Towers 7, 8, and 9 will be highly visible regardless of which route is used.



Close up of map shows new roads as green lines, dotted where drawn outside of the transmission line's path and appearing solid within.

FERC staff oversight: road started but not finished